



Kibibi
"Festival Of The Lion King"
Disney's Animal Kingdom Theme Park

Show Description:

"Festival of The Lion King" is an African-inspired celebration of the music from the animated feature film. Performed in a 1500 seat theatre in the round, this large scale, high energy production features singers, dancers, acrobatic tumblers and specialty performers.

Character Description: KIBIBI (*pronounced keh-bee-bee*)

Kibibi is one of four singers in the production. This charismatic group not only performs the familiar songs from the film, they also act as hosts for the show.

Kibibi is radiant, flirtatious and playful. She has a sophistication and onstage confidence, yet still retains her fun, youthful energy.

She performs *"Can You Feel The Love Tonight"*.

Script:

My turn! My turn! I'm next! Greetings everyone, and welcome to the "Festival of The Lion King".
My name is Kibibi. "Kibibi" is Swahili for "Princess".

Simba and the gang are going to be here any minute now, and to make them feel welcome we are going to greet them like animals. You, my friends, are going to be the Giraffe section! So let's see everyone put those arms in the air and make a giraffe sound.

(She realizes they don't know what a giraffe sounds like) You don't know what a giraffe sounds like, do you? Well, neither did I, so I looked it up. It said a low bleating sound, kind of like a sheep. So let's try again- arms in the air, and bleat!

(Reacting to audience participation) And there you have giraffes!

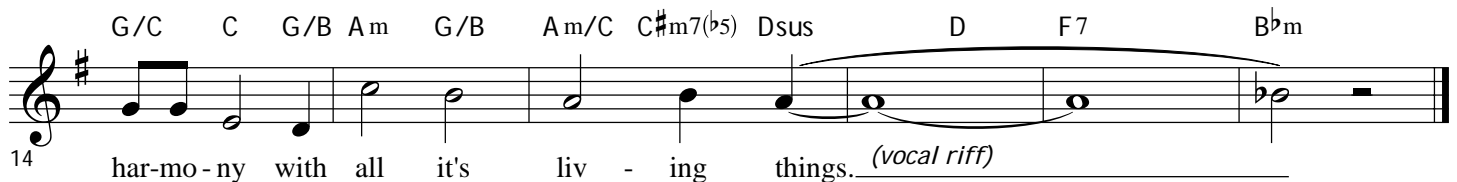
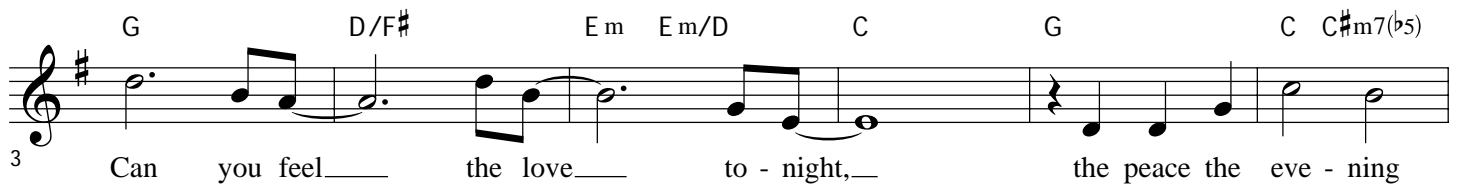
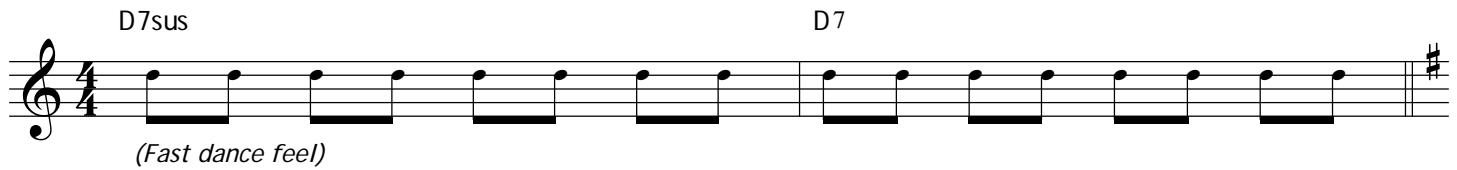
NOTICE

This material, and all concepts, ideas and information contained herein, are confidential and are the property of the Walt Disney Company. This material, including the concepts, ideas and information contained herein, shall not be published, broadcast, reproduced, disseminate, disclosed or used in any form or by any means, in whole or in part, without prior express written permission of the Walt Disney Company. All rights reserved. ©Disney.

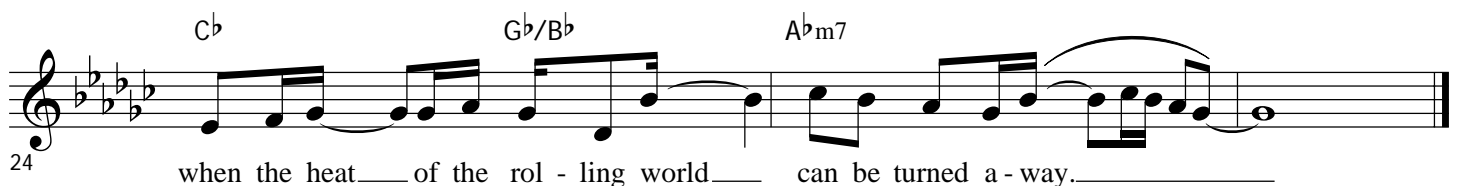
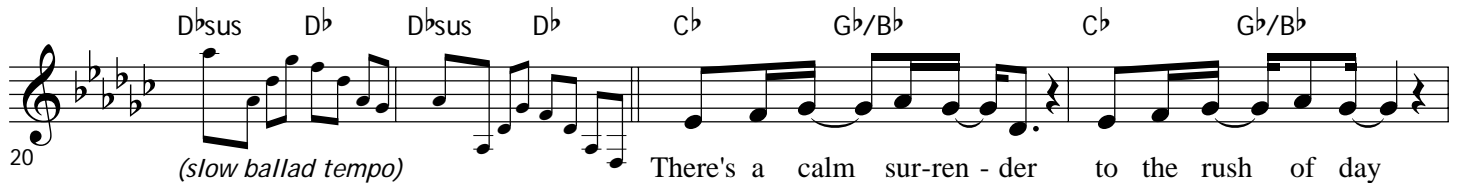
Finale Medley

Kibibi - Festival of the Lion King

"Can You Feel The Love Tonight?"



Part 2



NOTICE

This material, and all concepts, ideas and information contained herein, are confidential and are the property of the Walt Disney Company. This material, including the concepts, ideas and information contained herein, shall not be published, broadcast, reproduced, disseminate, disclosed or used in any form or by any means, in whole or in part, without prior express written permission of the Walt Disney Company. All rights reserved.

© Disney

Part 3

(Nakawa) Can you feel__ the love____ to - night, the peace the eve - ning brings.____ (riff/adlib)

(Kibibi) Can you feel__ the love____ to - night, the peace the eve - ning brings.

G \flat D \flat /F E \flat m C \flat G \flat C \flat C m7(\flat 5) D \flat sus D \flat

27

The world for once in per-fect har-mo-ny with all it's liv - ing things.____ (riff/adlib) And can

The world for once in per-fect har-mo-ny _with all it's liv - ing things.____ And can

C \flat G \flat /B \flat E \flat m7 G \flat /B \flat C \flat G \flat /B \flat C m7(\flat 5) A \flat m A \flat m/C \flat D \flat sus

31

___ you feel___ the love___ to - night?___ You need-n't look too far. *(riff/adlib)*

___ you feel___ the love___ to - night?___ You need-n't look too far.

Chords: G^b , D^b/F , E^b_m , C^b , G^b , $C^b m7(b5)$, D^b_{sus} , D^b

35

Part 4 *(Kibibi on top notes)* *(Nakawa on cues)*

The world for once___ in per-fect har-mo-ny___ with all it's liv - ing things. *rit.*

Chords: E^b , B^b/D , G_m , B^b/F , E^b , B^b/D , C_m , B^b/D , E^b , F , B^b

39